

Eclipse Series

RF Technology
rinfo@rftechnology.com.au

June, 1996

External Reference Module

P/N 11/9119

This manual is produced by RF Technology Pty Ltd
10/8 Leighton Place, Hornsby, 2077 NSW Australia
Copyright ©1998, RF Technology

Description -

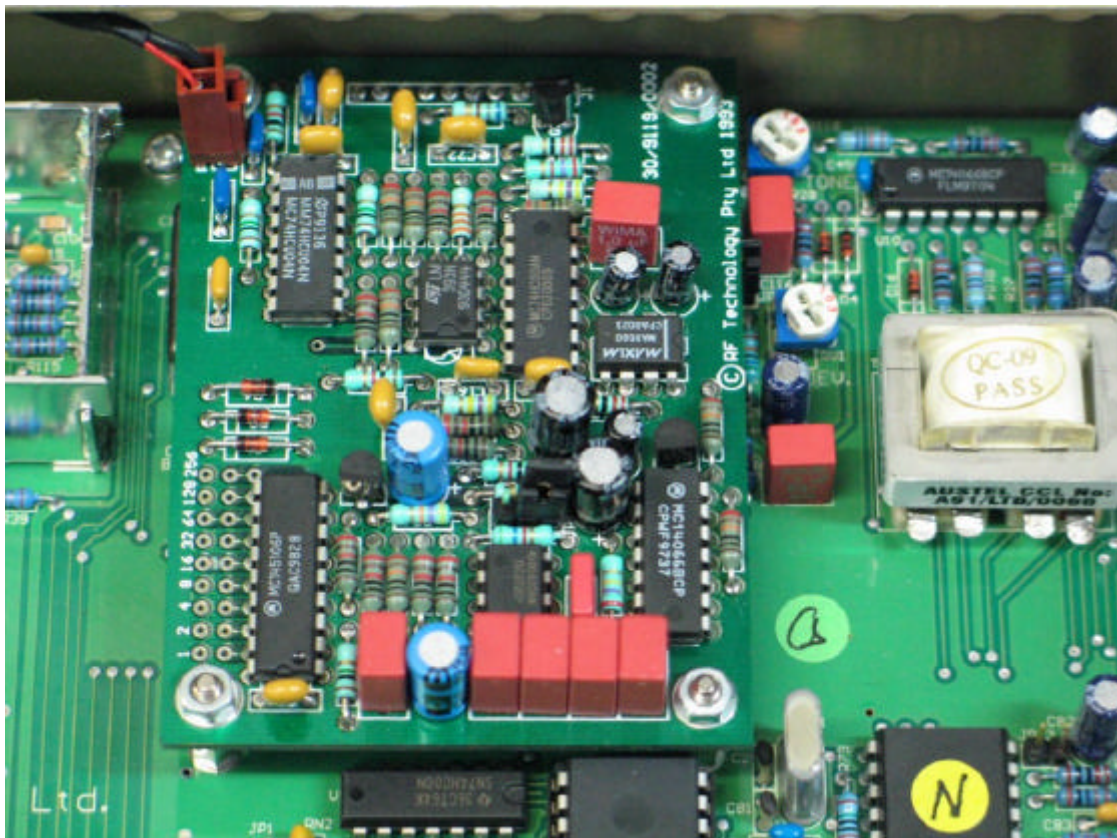
The External Reference Module is an internal option board for the Eclipse series transmitters. It allows the transmitters internal reference oscillator to be phase locked to an external reference. The transmitters frequency accuracy and stability is then determined by the external reference.

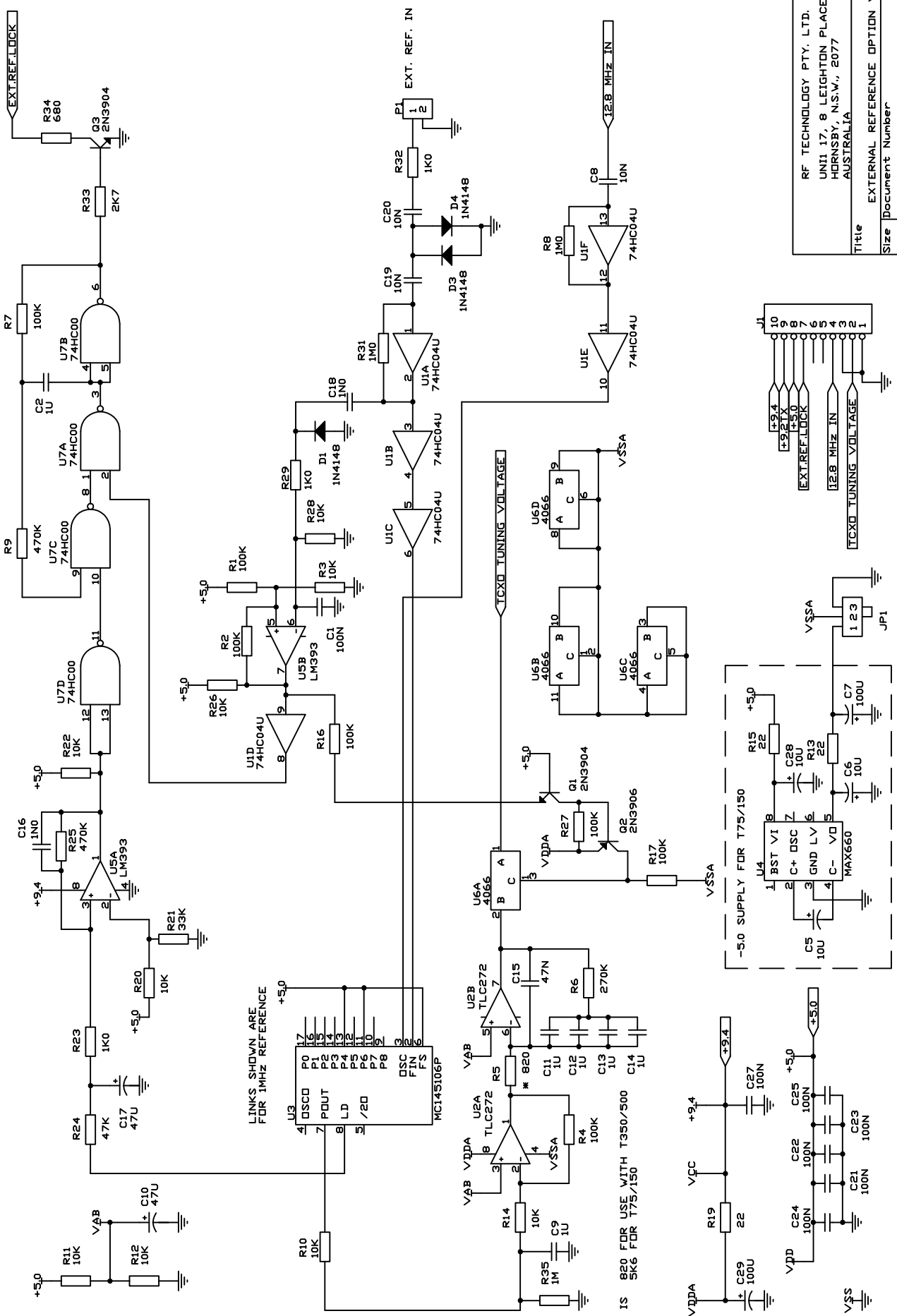
The reference signal may be from 1.0 MHz to 6.3875MHz at 12.5KHz step. IC U3 is a 9 bit divider. To program for 5MHz input use binary 110010000. i.e. $5000\text{KHz}/12.5\text{KHz}= 400 \text{ DEC} = 11001000 \text{ BIN}$. Link or cut the tracks at bits 1, 2, 4, 8, 16, 32, 64, 128, 256 as required. A link=1 a cut track=0

Automatic detection and switching of the reference signal provides fail safe operation in the event of the loss of the reference. The REF LED on the transmitter front panel indicates the presence of the external reference initially by flashing. When the internal oscillator is locked the LED stops flashing and remains ON.

The external reference is connected through a DB-9 connector on the transmitter rear panel.

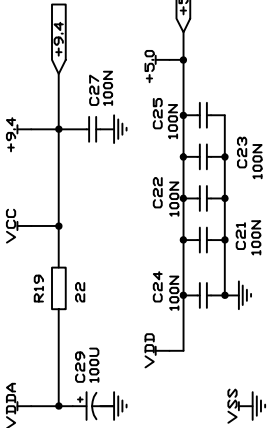
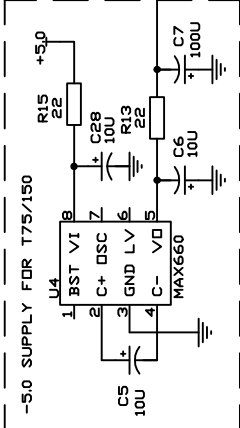
DB-9 Connector	Signal
Pin 1	Ground
Pin 2	Ext Reference Input



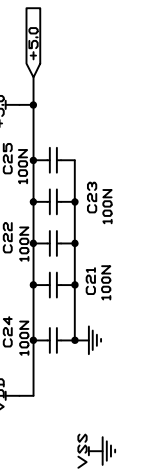
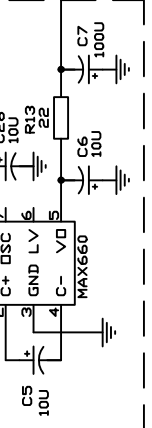
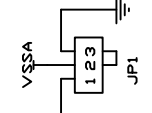
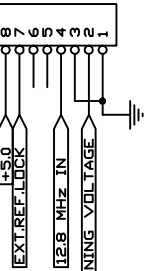


LINKS SHOWN ARE FOR 1MHZ REFERENCE

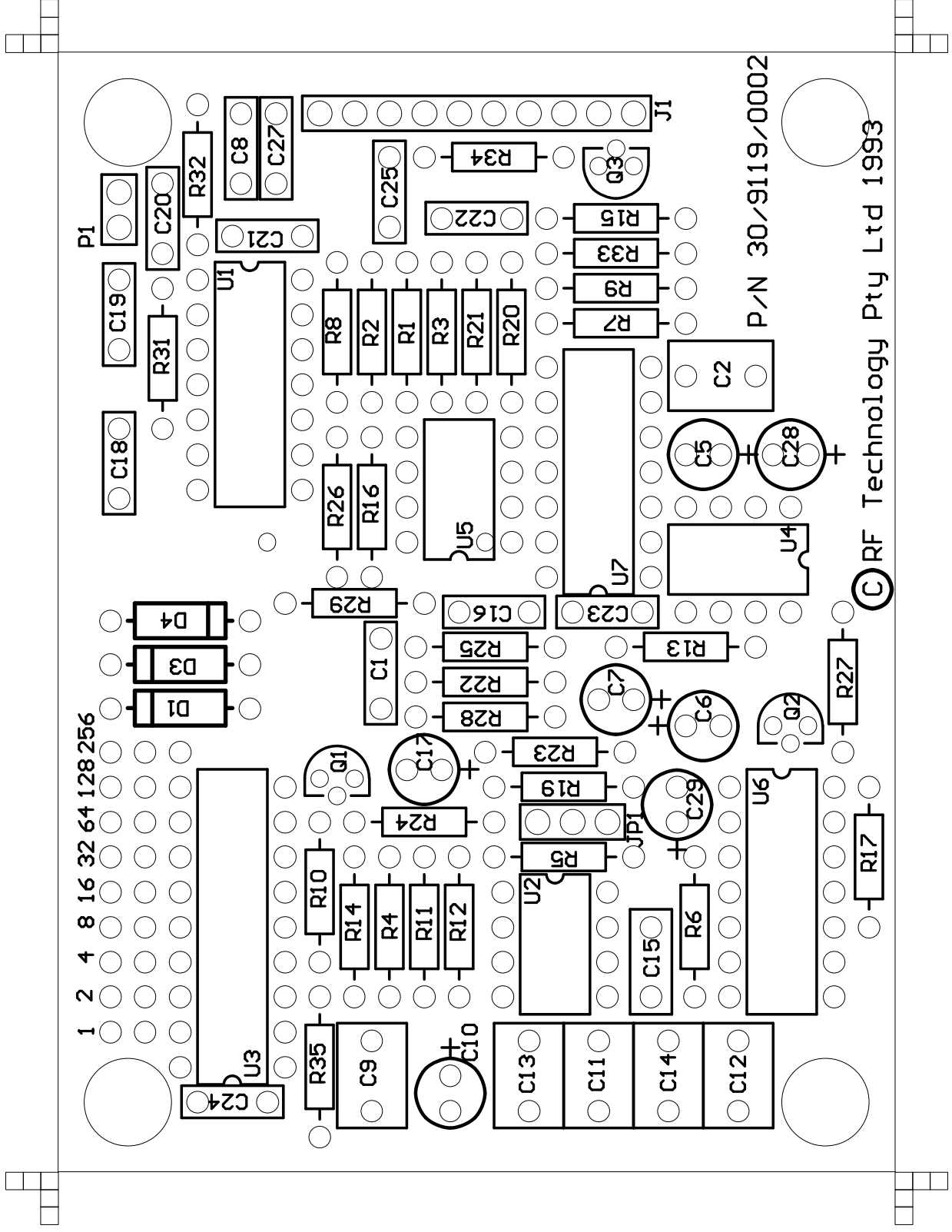
* R5 IS 820 FOR USE WITH T350/500 SK6 FOR T75/150



Title		EXTERNAL REFERENCE OPTION VER.2
Size	Document Number	REV
B	11/9119 R7	1
Date:	March 11, 1993	Sheet 1 of 1



RF TECHNOLOGY PTY. LTD.
 UNIT 17, 8 LEIGHTON PLACE
 HURNSBY, N.S.W., 2077
 AUSTRALIA



© RF Technology Pty Ltd 1993